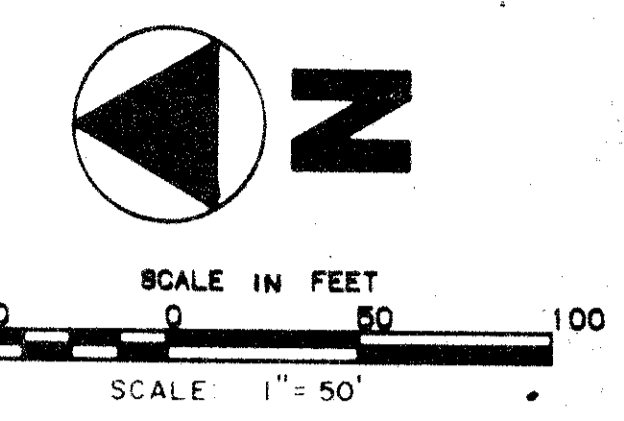


KEY MAP (nts)

# A PLAT OF CASSEEKEY ISLAND

## AT JONATHAN'S LANDING P.U.D.

BEING A REPLAT OF A PORTION OF PARCEL "Q",  
PLAT NO. 4 JONATHAN'S LANDING P.U.D. RECORDED IN  
P.B. 41, PGS. 183-185 LYING IN SEC. 7, TWP. 41 S., RGE. 43 E.,  
PALM BEACH COUNTY, FLORIDA



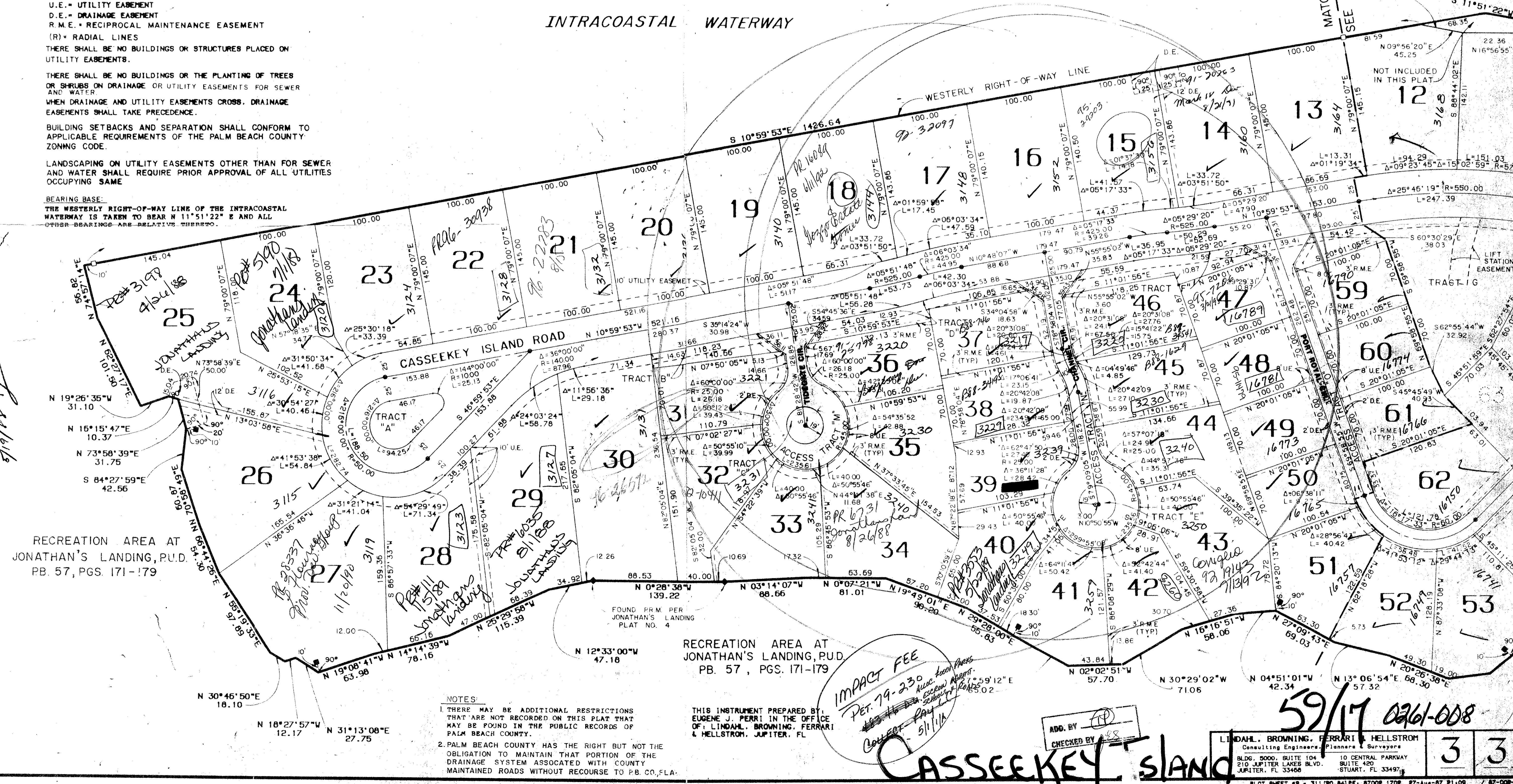
JANUARY, 1988

SHEET 3 of 3

- = FOUND IRON ROD & CAP #2799
  - = PERMANENT REFERENCE MONUMENT (P.R.M.) FOUND. #1652
  - = PERMANENT REFERENCE MONUMENT (P.R.M.) SET. #1652
  - ⊙ = PERMANENT CONTROL POINT (P.C.P.)
  - U.E. = UTILITY EASEMENT
  - D.E. = DRAINAGE EASEMENT
  - R.M.E. = RECIPROCAL MAINTENANCE EASEMENT
  - (R) = RADIAL LINES
- THERE SHALL BE NO BUILDINGS OR STRUCTURES PLACED ON UTILITY EASEMENTS.
- THERE SHALL BE NO BUILDINGS OR THE PLANTING OF TREES OR SHRUBS ON DRAINAGE OR UTILITY EASEMENTS FOR SEWER AND WATER.
- WHEN DRAINAGE AND UTILITY EASEMENTS CROSS, DRAINAGE EASEMENTS SHALL TAKE PRECEDENCE.
- BUILDING SETBACKS AND SEPARATION SHALL CONFORM TO APPLICABLE REQUIREMENTS OF THE PALM BEACH COUNTY ZONING CODE.
- LANDSCAPING ON UTILITY EASEMENTS OTHER THAN FOR SEWER AND WATER SHALL REQUIRE PRIOR APPROVAL OF ALL UTILITIES OCCUPYING SAME.

INTRACOASTAL WATERWAY

BEARING BASE:  
THE WESTERLY RIGHT-OF-WAY LINE OF THE INTRACOASTAL WATERWAY IS TAKEN TO BEAR N 11°51'22" E AND ALL OTHER BEARINGS ARE RELATIVE THERETO.



1098  
33458  
RM

A506  
11-23-80  
PMD 7-1-85

IMPACT FEE  
PET. 79-230  
COLLECT. PAY 5/1/18

ADD. BY [Signature]  
CHECKED BY [Signature]

NOTES:  
1. THERE MAY BE ADDITIONAL RESTRICTIONS THAT ARE NOT RECORDED ON THIS PLAT THAT MAY BE FOUND IN THE PUBLIC RECORDS OF PALM BEACH COUNTY.  
2. PALM BEACH COUNTY HAS THE RIGHT BUT NOT THE OBLIGATION TO MAINTAIN THAT PORTION OF THE DRAINAGE SYSTEM ASSOCIATED WITH COUNTY MAINTAINED ROADS WITHOUT RECOURSE TO P.B. CO., FLA.

RECREATION AREA AT JONATHAN'S LANDING, P.U.D. PB. 57, PGS. 171-179

59/17 0261-008

**CASSEEKEY ISLAND**

L. DAHL, BROWNING, FERRARI HELLSTROM  
Consulting Engineers, Planners & Surveyors  
BLDG. 8000, SUITE 104  
210 JUPITER LAKES BLVD.  
JUPITER, FL 33466

10 CENTRAL PARKWAY  
SUITE 450  
STUART, FL 33497

3 3

PLOT SHEET #2 - 311 (20,84)PF, 87008 1708 87-Aug-87 81-09 87-008-1